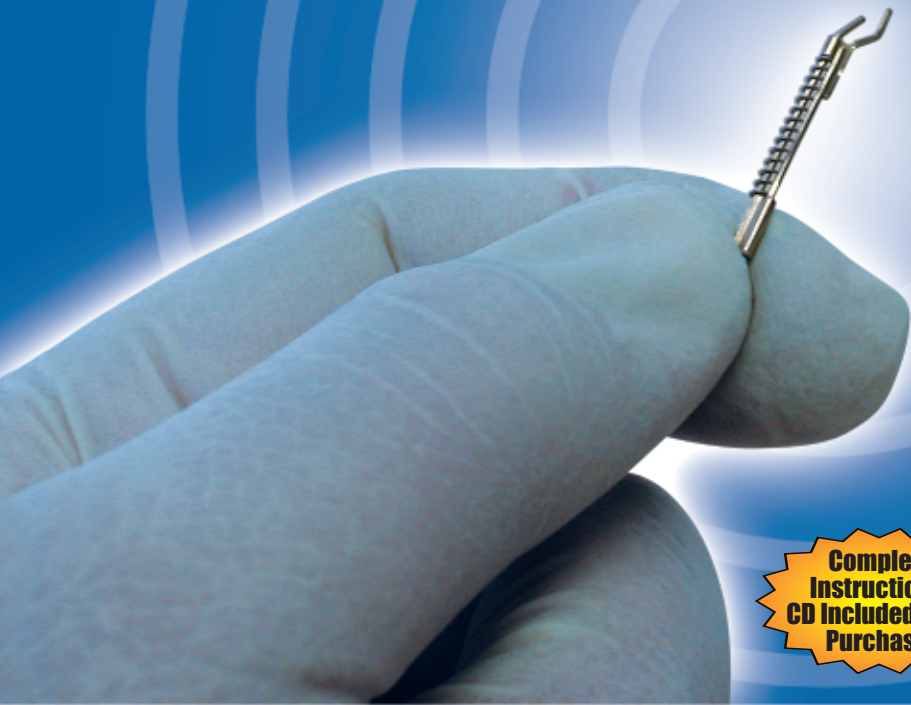


# INTRODUCE A **SILVER BULLET**

## *Into Your Orthodontic Practice!*



**Lancer's Lokar Distalizer** is skillfully designed with precision and balance.

Form and function work in tandem to save you time and money!

**Complete  
Instructional  
CD Included Upon  
Purchase!**

**LANCER**  
ORTHODONTICS

## **One Piece, Continuous Forces and Retrofittable**

The Lokar Distalizer moves molars without relying on patient compliance.

Dr. Bob Lokar designed an appliance with one thing in mind - *simplicity*. His Distalizer works with any common labial fixed appliance; and it works very well for mixed dentition cases. The Lokar Distalizer is tied easily into position with ligature wire. It is similar in functionality to other labial or lingual non-compliant distalizing systems, however the Lokar Distalizer is encompassed in one convenient, streamlined unit.



## **Silver Bullets:**

 Great for Mixed Dentition Cases

 Provides a Light, Continuous Force

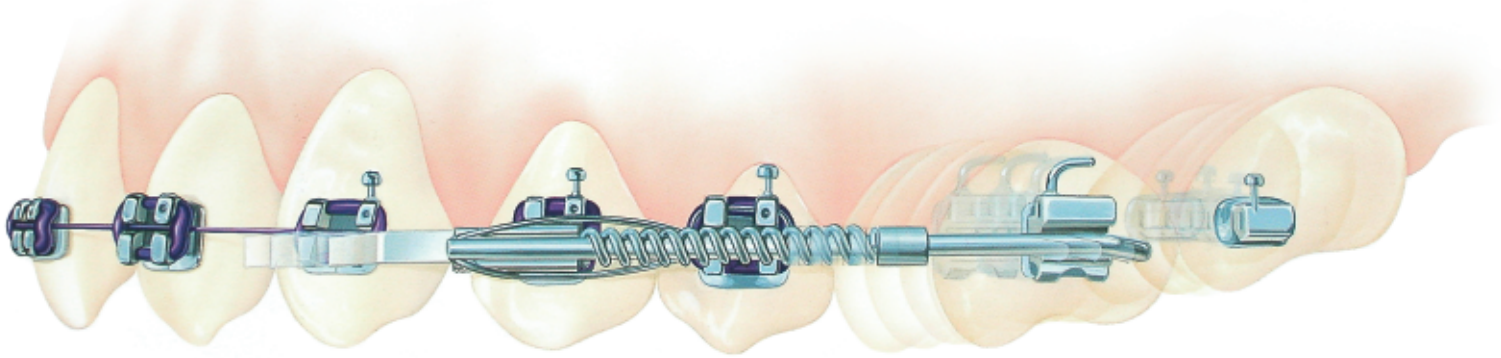
 Great for Gaining Unilateral Distalization

 Comfortable for Your Patients

 Gain Space Without Compliance

 Easy to Incorporate

# Go Ahead ... Make Your Move!



## Lokar Molar Distalizing Appliance

### Details for use

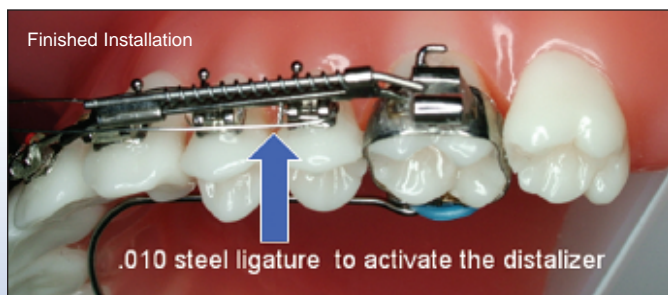
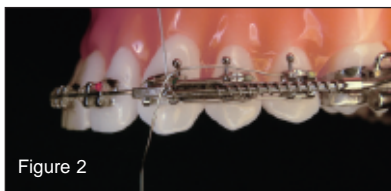
In using the Lokar Distalizing Appliance, 1st molars are usually banded, but they can also be bonded. Bonding molars allows for the use of an EZ lingual arch to control the molars during distalization (ie: expansion, rotation and translation).

**ANCHORAGE:** If used with full fixed appliances, a banded or bonded Nance can be used from the 2nd molars. In the case of mixed dentition a bonded Nance is recommended.

If full fixed appliances are used, another anchorage option is to ligate a full-size wire from 2nd bicuspid to 2nd bicuspid. Dr. Lokar prefers to bond the entire lower arch, as well as ligate a full size wire and instruct the patient to use class II elastics.

### Instructions

1. If full fixed appliances are used, cut the archwire distal to the maxillary second bicuspid on the side, or sides, to be distalized. In the mixed dentition, bond bicuspid brackets to the primary molars and insert a passive sectional archwire.
2. Make sure that the second bicuspid is ligated with a steel ligature tie.
3. Insert the distalizer into the archwire slot of the 1st molar tube, then cut any extra wire that extends past the archwire slot.
4. Adapt the distalizer parallel to the archwire so that it lies passively on top of the archwire and bicuspid brackets. Once adjustments are made, the appliance should be parallel to the archwire plane.
5. Insert a steel ligature wire around the cut archwire projecting past the



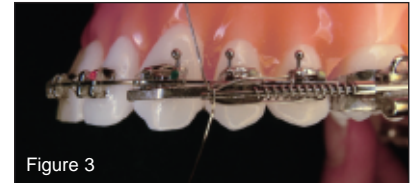
maxillary second bicuspid and engage the ligature under the occlusal and gingival tiewings. (Figure 1)

6. Bring the two ends of the ligature wire forward, parallel to the distalizer. Cross the two ends in the notch formed by the sliding portion of the distalizer and flat bar shaft upon which it slides. (Figure 2)

7. Activate the appliance by pulling the two ends in opposite directions until you have achieved the degree of activation you feel is appropriate, usually around 2-3mm. (Figure 3)

8. Twist the two ends 360 degrees to "lock in" the activation. If fixed appliances are not present, continue to twist the ligature wire to lock in place; then cut and tuck. (Figure 4)

9. \*Take one end of the tie wire and insert it over and around the archwire. Bring it out and parallel to the other end. Pigtail tie and secure the distalizer firmly to the archwire (Figure 5). This is the preferred method for maximum stability.



\*Not necessary unless full fixed appliances are used.

### Helpful Suggestions

The amount of distalization will vary from patient to patient. On average, expect approximately 1mm of movement per month. Initial movement will be a distobuccal rotation followed by distalization. Once distalization has been accomplished, the molars must be held in place while allowing the bicuspids to drift distally. This can be accomplished in a number of ways. First, a Nance appliance can be fabricated to fit the palate and be attached to the distalized molars via the EZ lingual arch. Second, a rectangular step back arch can be used. This arch should be engaged into the anterior teeth. The step-up bend should be placed 2-3mm distal to the cuspid and just mesial to the molar buccal tube. This wire should be inserted into the main archwire slot of the buccal tube.

ORDER FORM		
PART NUMBER	DESCRIPTION	ORDER
555-300	LOKAR DISTALIZERS - 10 PACK	
999-016	DISTALIZER TRAINING CD	
576-310	SHORTY PREFORMED LIG WIRES (1000)	
576-110	PREFORMED LIG WIRES (1000)	
575-110	LIGATURE WIRE SPOOLS (1 LB)	

253 Pawnee Street • San Marcos, CA 92078 • 800.854.2896  
 Fax 760.744.5724 • Intl 760.744.8756 Ext# 2718 or 2719  
 email: info@lancerortho.com • Intl email: aabbiate@lancerortho.com



Your Choice for Sensible  
Orthodontic Solutions